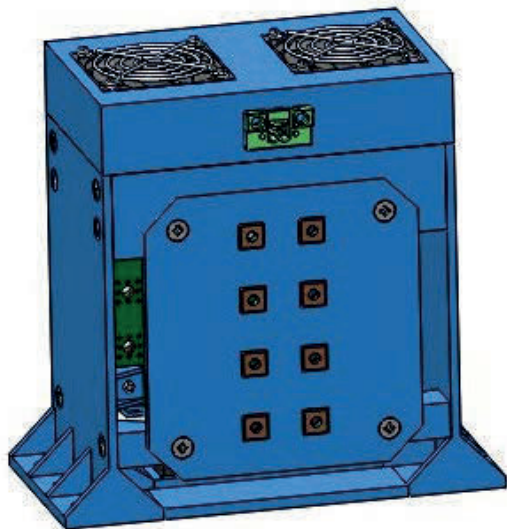
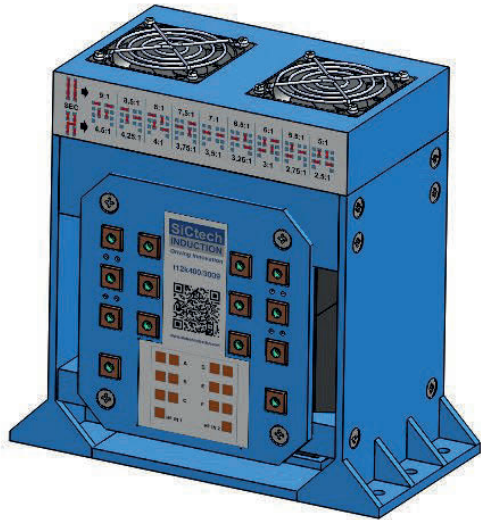


Compact Induction Heating Transformer t12k400/1509F



Pictures are only for reference

- 15 kVA MF-HF Transformer
- Input Voltage: 437 to 650 V_{RMS}
- Frequency Range: 15 kHz - 400 kHz
- 15 kVA in 4 litres
- Power Density: 3,75 kVA/litre
- Efficiency: 95%
- Weight: 3,7 kg
- 18 Ratios Available (2,5:1 to 9:1)

Universal Transformer for Induction Heating Applications

Total Output Power 15 kVA

Wide Frequency Range 15..400 kHz

Designed for SiCtech Modules

Multi-Ratio Technology

High Efficiency

Ultra Compact Size & Low Weight

Wide Voltage Range

Forced Air Cooled

Modules Compatible

- i100k400 (8 transformers)
- i50k400R (4 transformers)
- w12k400R (1 transformer)

www.sictechinduction.com
sictech@sictechinduction.com



GENERAL FEATURES

Output Power	15 kVA
Output Frequency Range	15...400 kHz
Number of ratios availables	18 (check ratio chapter below)
Efficiency	95%
Power Density	3,75 kVA/litre
Power Specific Weight	4,1 kVA/kg

INPUT

Input Voltage Range	437...650 V _{RMS}
Operating Frequency Range	15...400 kHz

RATIOS INTEGRATED IN THE TRANSFORMER

Ratios available	9:1	4,5:1
	8,5:1	4,25:1
	8:1	4:1
	7,5:1	3,75:1
	7:1	3,5:1
	6,5:1	3,25:1
	6:1	3:1
	5,5:1	2,75:1
	5:1	2,5:1

MECHANICAL SPECIFICATIONS

Size (width x depth x height)	198 x 130 x 195 mm
Weight	3,7 kg

COOLING SPECIFICATIONS

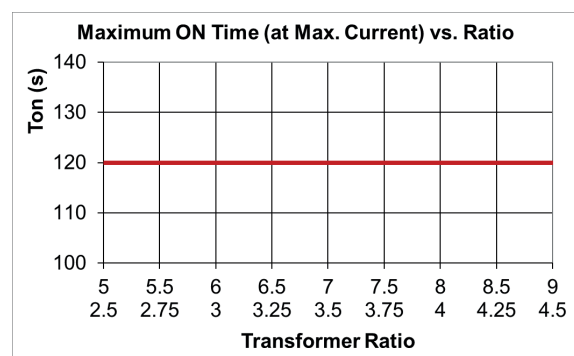
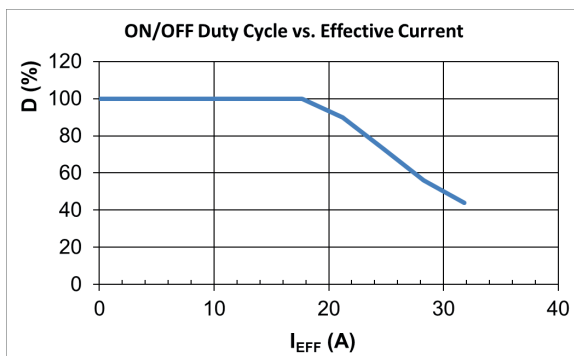
Cooling	Forced Air Cooled
---------	-------------------

ENVIRONMENTAL CONDITIONS

Environmental Temperature Range	-10°C to +40°C
Maximum Humidity	90%

MODULES COMPATIBLE

Modules	i100k400 (8 transformers needed) i50k400R (4 transformers needed) w12k400R (1 transformer needed)
---------	---



SMART INDUCTION CONVERTER TECHNOLOGIES S.L.

Parc Científic de la Universitat de València
c/ Catedrático Agustín Escardino 9
46980 Paterna, Valencia (SPAIN)
Phone: +34 644 263 666



www.sictechinduction.com
sictech@sictechinduction.com